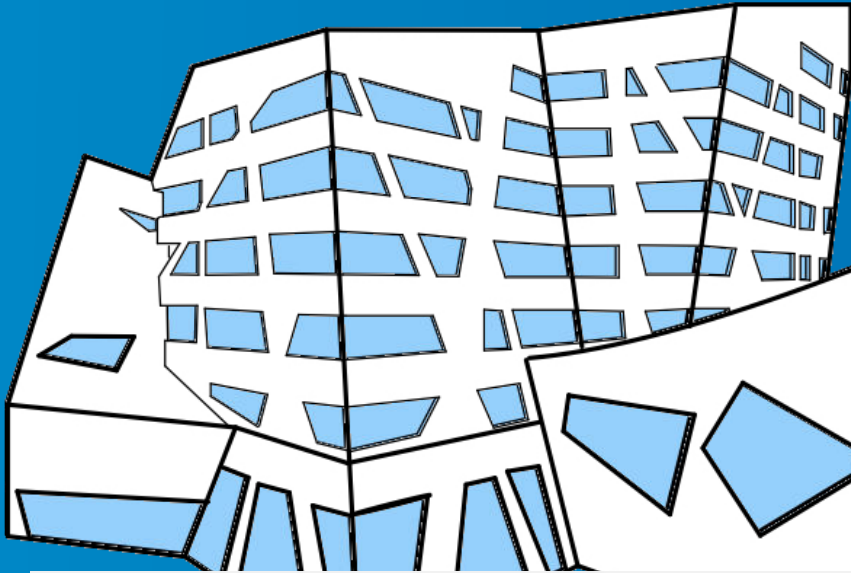


Englische Fassung

**RC
DS**



The new centre.

Pragmatic. | Constructive. | Progressive.

For progress on campus.

The Campus Union.



Ring Christlich-
Demokratischer
Studenten

**OUR ELECTION PROGRAMME
FOR 2022**



Foreword

As Germany's largest, oldest and most influential political student association, the Ring Christlich-Demokratischer Studenten (RCDS) has been characterised by a resolutely democratic, pragmatic and constructive centrist university policy since its inception.

Since its foundation in 1951, committed students from a wide range of disciplines have come together in a nationally organised student association. What they all have in common is the conviction that the time spent studying should not be limited to the mere study of a subject.

The fundamental compass of our work is always oriented towards the free democratic basic order. Then as now, our convictions are characterised by Christian Democratic, conservative and liberal values. Thus, we stand for a constructive and ideology-free higher education policy that is constantly oriented towards democratic, liberal, social, European and conservative values. We advocate more *Realpolitik*, fight for pluralism of opinion and a lived culture of debate with respect and tolerance. Starting this year, we would therefore like to offer a real alternative to the primarily left-dominated university politics.

In order to reaffirm the currently thinned-out centre of our university political landscape, the RCDS Lüneburg, as a liberal-conservative university group, wants to work hard to fill this gap. Because conservative is not backward-looking or dusty, but rather understands itself as a non-ideological and constructive attitude towards change.

This programme for the upcoming StuPa elections is therefore intended to provide an overview of the principles and political goals of our university group, so that we can become the new student centre for the quality of our studies and everyday life, as well as for us students.

Felix Thiesen
Chairman

Nicole Haase
Vice-Chairman

Julian Rohwer
Vice-Chairman

The student centre.

Content

University worth living at	3
Leuphana Card 2.0.....	3
Drinking water and hygiene stations.....	3
For a diverse gastronomy and cafeteria.....	4
Blooming University	4
Campus OpenAir	4
Shaping the university for the broad majority	4
Freedom of Language	4
AStA for everyone	5
Against any kind of extremism	5
Improvement of teaching.....	6
No exams after 6 pm.....	6
International Students.....	6
Digital University	6
Continuation of hybrid teaching even after the pandemic	6
Digital Library.....	7
Launch of a myStudy App	7
Digital Elections.....	7

Principles

We see ourselves as a political university group that does not fixate on questionable ideologies, but stands up freely, creatively and pragmatically for truly relevant student interests. Therefore, we stand for a constructive and ideology-free university policy that is guided by democratic, liberal-conservative, social and European values.

As a legally independent student interest group that is close to the two Union parties in terms of values and conservative orientation, we fight for pluralism of opinion, respectful cooperation, university freedom and a genuine culture of debate that ultimately achieves progress for all through the exchange of ideas. As the local group of Lüneburg, we belong to the federal association of the RCDS. We are represented internationally at European level through our umbrella organisation EDS (European Democrat Students).

University worth living at

Leuphana Card 2.0

The time of the printed student card with separate canteen and library card is over! This has long been the norm at many German universities, but in Lüneburg it is still a vision. What is needed is a Leuphana card that combines all relevant functions. No matter whether it's a library or student card, a canteen card, a semester ticket or for use in university sports: we finally need a uniform card that brings together the most important university functions. Since only the functions of the canteen and library card have been linked to the conventional Leuphana card so far, the RCDS Lüneburg advocates the integration of the semester ticket as well as the card for the use of university sports facilities. Furthermore, the implementation of online banking and PayPal for topping up the Leuphana card should be discussed in order not to be dependent on carrying cash in the future.

Drinking water and hygiene stations

Tap water is convenient because you don't have to carry bottles, sustainable because the water doesn't have to travel long distances, and cheap. That is why we would like to see water dispensers in the university buildings, especially in the refectories, so that every student can conveniently, sustainably and free of charge fill up the bottles they have brought with them.

In addition, we would like to campaign for more disinfectants to be available in the university's public buildings, e.g. in the libraries, toilets, refectory and central building, in order to improve hygiene conditions.

For a diverse gastronomy and cafeteria

Healthy and balanced nutrition plays a big role for us. We want the canteen to offer a fresh salad buffet instead of pre-packaged products, which cause a lot of avoidable plastic waste. Furthermore, there should not only be a vegetarian but also a vegan meal offer every day, which should not be priced higher than the meal with meat. However, it is not the task of the canteen to decide on the eating habits of the students. We therefore reject a blanket ban on meat or cola. Furthermore, there finally needs to be a meeting place next to the refectory again, for example in the form of a new student café.

Blooming University

We advocate for more dwellings for insects and more wildflowers on the campus grounds. Many areas between the buildings lie unused, and we also see more potential for direct environmental and climate protection on site in the biotope next to the central building.

Campus OpenAir

After the pandemic, there needs to be more student life on campus again. In order to further this wish of many students, we would like to have a free event where artists from Lüneburg and the surrounding area can perform on the field next to the cafeteria.

Shaping the university for the broad majority

Freedom of Language

The RCDS stands for a liberal, inclusive and pluralistic society. The representation of gender forms alongside the male and female norm in the form of gendering is widespread at university. Nevertheless, there are still a large number of female and male students who do not want to gender privately or in term papers, exams or theses. In our opinion, that is their right! We stand up for the freedom to decide for oneself whether to gender or which form of gendering to use. We reject any compulsory gendering imposed by the university.

Regardless of whether gender asterisks, indented I's, colons, slashes, underscores or participial forms are used, it is unacceptable that students are forced by fellow students and lecturers to use a gender-neutral form of language in seminars or group work.

We are critical of the implementation of the actually good intention of gendering, as addressing non-binary groups by means of the gender asterisk can contribute to a fragmentation of the student body. We consider the fragmentation and classification of the student body into smaller and smaller groups by means of obligatory instrumentalised language to be dubious and questionable.

AStA for everyone

One AStA for all. Sounds like a pure self-image at first, but some students are repeatedly confronted with the question of whether the AStA is a truly neutral body. For some time now, the AStA at Leuphana University seems to have been politicised both internally and externally.

The RCDS Lüneburg opposes this interpretation. We see the tasks of the AStA primarily in the representation of the interests of the entire student body. The AStA should be there for all students and devote itself primarily to university issues and less to world politics. The RCDS rejects a general political mandate. Of course, we respect any opinions on university policy issues, but it is questionable to what extent the use of the mandate, which is aimed at self-administration, for political activities of the representatives that go beyond the university is acceptable.

Against any kind of extremism

As RCDS, we stand united against any form of extremism - whether right-wing, left-wing, religious or otherwise motivated. The campus should be a place of diverse debate within the democratic spectrum. At the university, it is allowed to disagree and to argue passionately in order to find the best solutions. However, exclusion, bullying, vandalism or even violence against people have no place here and should be sanctioned consistently and severely. Especially at events on campus, we expect a student connection; extremist ideas of any kind have no place here!

Improvement of teaching

No exams after 6 pm

Leuphana University still holds exams after 6 pm. This is not optimal for the students - regardless of when the event took place during the semester. Therefore, the RCDS Lüneburg advocates that written examinations should no longer be written after 6 pm. Instead, concepts must be created so that all examinations can begin before 6 pm.

International Students

The RCDS Lüneburg stands up for international students. However, since we are aware of some of the problems that complicate and shape everyday life for internationals, we would also like to stand up for their interests.

For example, international students repeatedly complain about the lack of choice in English modules or language courses. The seminars and lectures planned in English must also be consistently taught in this form. Internationals often complain that the language of instruction changes during the course. We find this unacceptable.

In addition, many internationals are often confronted with the hurdles of German bureaucracy. BAföG and other concerns can often be very gruelling. Although the AStA already offers a competent contact point for this, an expansion of the mentoring programme would undoubtedly be beneficial. In addition, we would like to advocate for a job exchange for international students and advocate for offering jobs in English at the university itself.

As the RCDS Lüneburg, we also advocate for a more integrative design of university sports.

Digital University

Continuation of hybrid teaching even after the pandemic

The Covid 19 pandemic has lost its horror for many, and this can also be felt at Leuphana. Almost all courses are offered in person again, which we as the RCDS expressly welcome. Nevertheless, the online events also have advantages, which should continue to be used for the benefit of the students. In particular, commuters, students with part-time jobs or parents benefit from the flexibility of online events. Therefore, we advocate in your interest that lectures without substantial exchange between participants continue to be recorded in order to make them available to students independent of time and place.

Digital Library

Our library is already well positioned in the digital field. Nevertheless, there are always limits to what can be researched. In the future, the online offer must be further expanded so that all works are easily available. In addition, it is important to offer a larger number of important standard works and textbooks on site so that all the literature recommended by the lecturer is not out of stock on the first day of the lecture period.

Launch of a myStudy App

In times of progressive digitalisation of German universities, Leuphana University should also simplify its digital organisational programmes and make them more accessible. As the RCDS Lüneburg, we would like to advocate for the development and implementation of a "myStudy app". Many students are bothered by opening the myStudy page with their smartphone browser. An app is more user-friendly because it is easier and more convenient to use.

Digital Elections

At 10.82%, the voter turnout in the last StuPa elections leaves much to be desired, not only at Leuphana University, but also at universities nationwide. We would like to remedy this situation by campaigning for digital university elections. The big problem with poor voter turnout is the legitimisation of office holders. With such turnouts, it is only possible to speak of a broadly based election result that is supported by the majority of students. Democracy lives from its voters and cannot survive without them. As is well known, democracy works best when many people go to the polls and cast their votes for their representatives. The RCDS Lüneburg therefore calls for the introduction of online voting for academic and student bodies at Leuphana University. It is important to put this point on the agenda and to create the legal basis for it. The RCDS Lüneburg is ready to actively support and participate in order to realise this project. Because it is about nothing less than democracy at our university. It is about us and those who make decisions for us and others.